

# Governance Models for a Diverse Society

Spandau, Berlin

InNODS

International Institute of Innovation in  
Organizational Development and Society

Pº Virgen del Puerto 29, 6ºB, 28005 Madrid, Spain  
E-mail: [innods@innods.net](mailto:innods@innods.net)  
<http://www.innods.net>



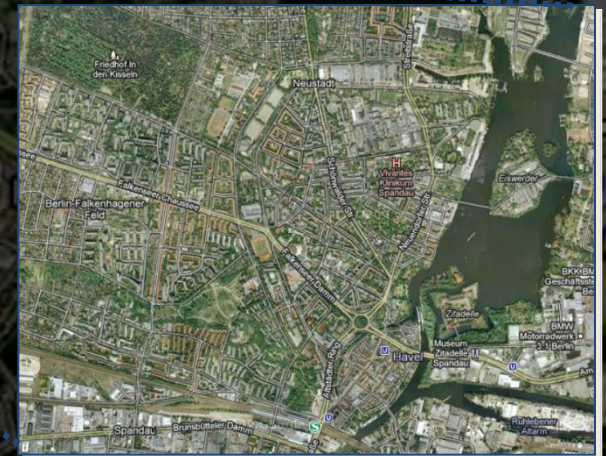
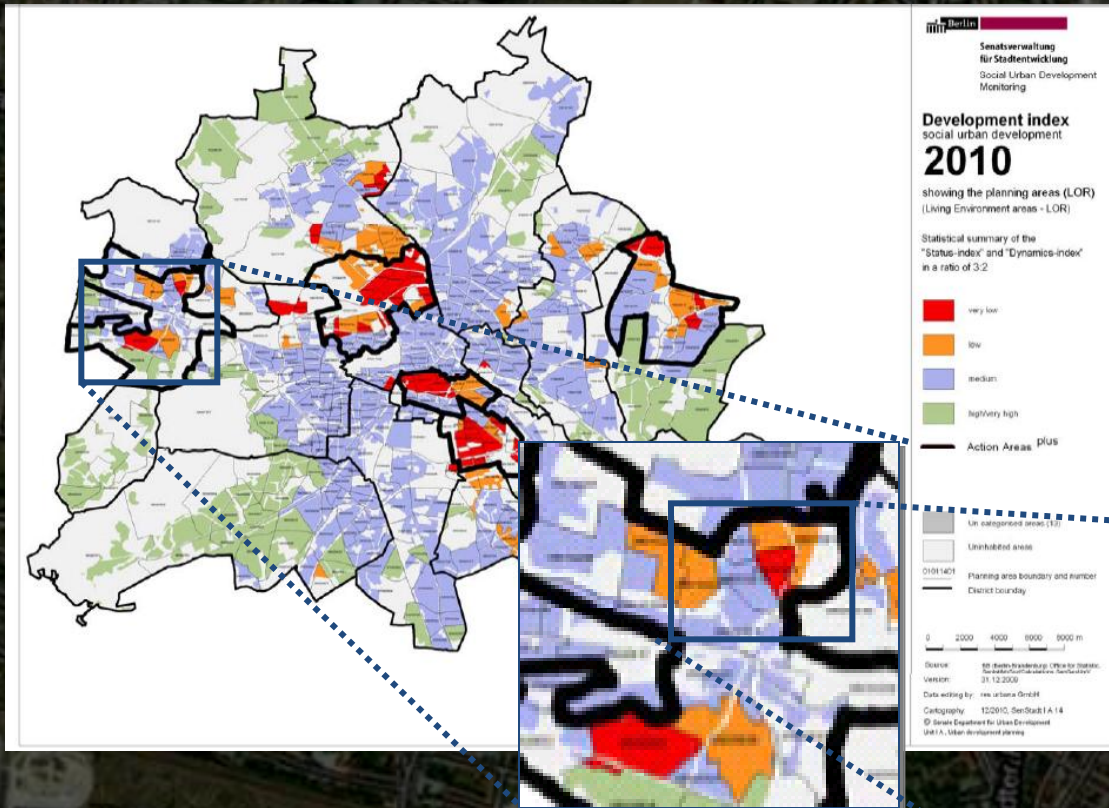
Public **Safety**  
Community **Program**

**InNODS**

International Institute of Innovation in  
Organizational Development and Society

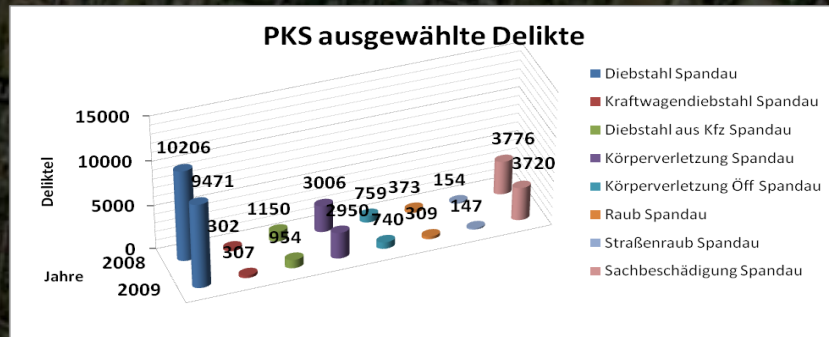
# The case of Spandau, Berlin

A District with strong differences in social development, reflected in socio-spatial fragmentation



# The case of Spandau, Berlin

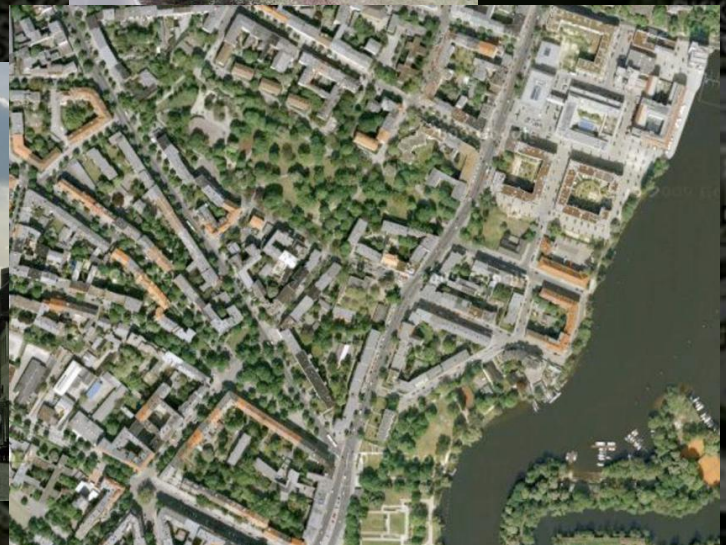
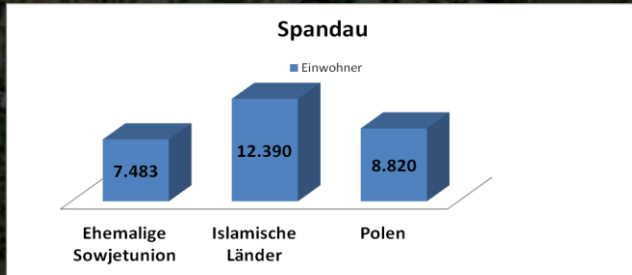
The challenge → Low community engagement → Frequent environmental offenses



# The case of Spandau, Berlin

The opportunities → Spandau, a crossroad of socio-cultural and ecological diversity

→ Experiences and practices on community policing and governance management already in place



Spandau Brunsbütteler Damm

# A Spandau Community Stewardship Network

An example of a pilot project and a case for an International Program on R+D+I  
*Models of Governance for a Diverse Society*

An integral territorial management of public safety and governance, with a combination of methodologies merging at community level:

- Community Preventive Policing
- Community Justice
- Participatory Urban Planning and Stewardship
- Land planning based on sustainable public safety value chains and networks.
- Community and District governance methodologies (strengthening those already present)

Spandau project would share common criteria as other cases in cities such as Madrid, Barcelona, Belem (Brasil), New York, and Pasadena (USA) and would benefit from the joint experience on all these pioneering projects.

# A Spandau Community Stewardship Network

## An example of implementation process:

### Step 1: Starting an *Integral Community Governance* process by fostering community governance:

- Studying present governance structures, processes, resources, and roles of each agency and community body, starting at “ground-level”
- Strengthening general services management at community level
- Strengthening inter-agency teams of community specialists at district level
- Strengthening community networks among public, private, and community bodies
- Strengthening general neighbourhood councils, allowing the inclusion of all people as a “whole”, and safety and justice commissions



# A Spandau Community Stewardship Network

## An example of implementation process:

### Step 2: Community Stewardship Circles

Community councils connecting neighbours around a square, street, or park, to participate in its definition of uses and care processes (activities) and structures (roles, safety commissions, neighbours' juries...).

(In the pictures, just examples. Cases would be selected among those with special problems)




# A Spandau Community Stewardship Network


## An example of implementation process

### Step 3: Community Stewardship Networks and Chains


#### Connecting CSC as nodes of networks and chains

(in the pictures, just examples. Cases would be selected based among those with special problems)

 Community Stewardships Circles

 Network

 Chain

 Chain node

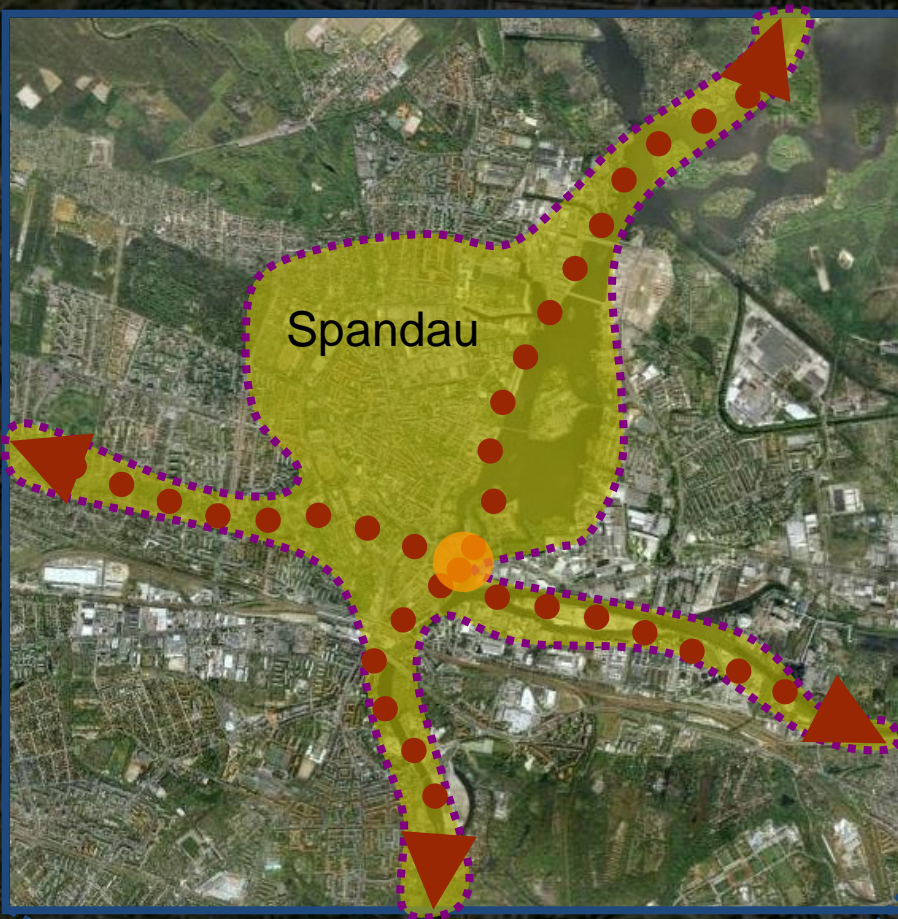


## Step 4 and following: *Spandau Stewardship X Corridor*

Spandau as an Axe of territorial vertebration through “care” Corridors connecting social and environmental diversity.

Public safety and governance as means of sustainable integration of a diverse society at city level and...

at regional level?



# Some collaborative entities and programs of Public Safety Community Program and InNODS

